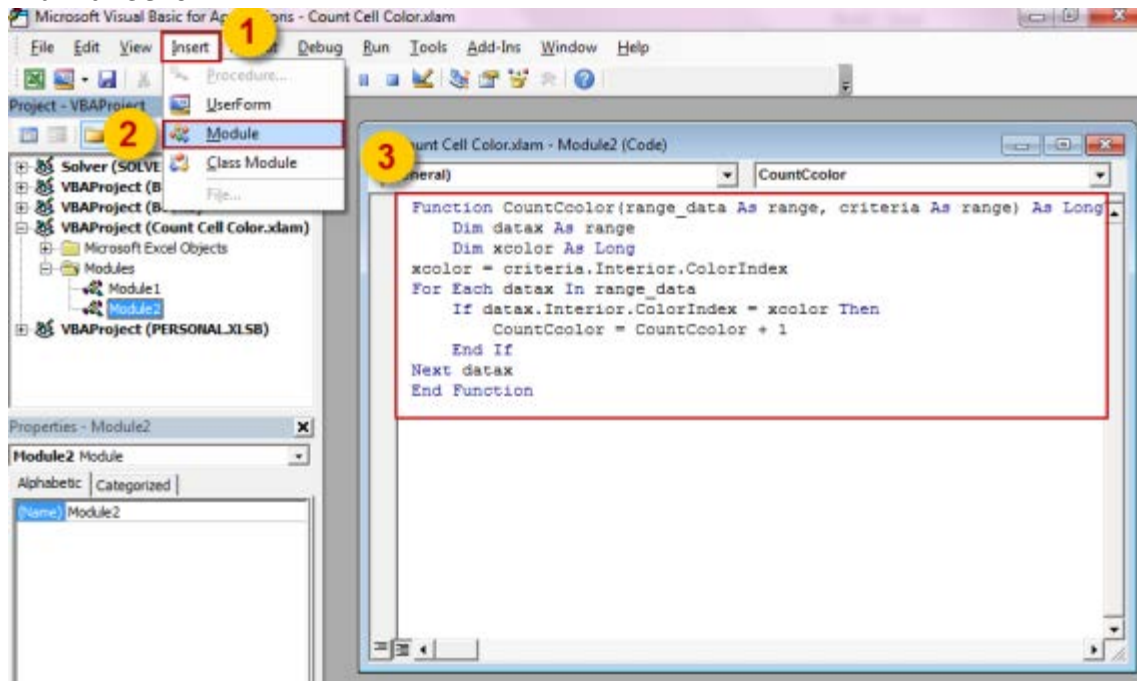


# What To Do

Here the steps to create the count cell color UDF:

1. Open Microsoft Excel then press Alt+F11 to show Visual Basic Editor window.
2. On Insert menu, select Module to create a module. Then write the following script:

```
Function CountCColor(range_data As range, criteria As range) As Long
    Dim datax As range
    Dim xcolor As Long
    xcolor = criteria.Interior.ColorIndex
    For Each datax In range_data
        If datax.Interior.ColorIndex = xcolor Then
            CountCColor = CountCColor + 1
        End If
    Next datax
End Function
```



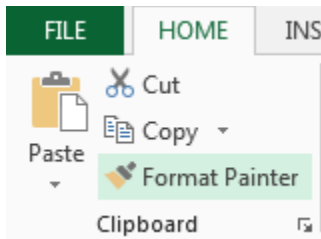
3. Close VBE window and back to Excel.
4. To test the UDF, create some example data, or you can download this example file [here](#) .
5. At cell A44, write the function: =CountCColor(range\_data,criteria)  
in range\_data argumen, select cell A5 to A43  
in criteria argumen, select cell D1

	A	B	C	D	E	F	G
1		Color I want to count:			Hoover over the coment in cell A1.		
2							
3							
4	Division	Hours	PayRate	GrossPay	Output	Cost	Per We
5	Anacortes	40	23.00	920	3.2%	\$ 12,713.40	\$ 29.35
6	Anacortes	40	24.00	960	3.3%	\$ 13,665.26	\$ 31.96
7	Anacortes	40	23.00	920	3.2%	\$ 12,713.40	\$ 29.35
8	Bremerton	32	22.25	712	2.5%	\$ 8,416.70	\$ 17.58
9	Bremerton	36	15.45	556.2	1.9%	\$ 5,915.74	\$ 10.73
10	Bremerton	36	15.45	556.2	1.9%	\$ 5,915.74	\$ 10.73
11	Hoquiam	40	21.50	860	3.0%	\$ 11,361.57	\$ 25.65
12	Hoquiam	40	22.00	880	3.1%	\$ 11,802.06	\$ 26.85
13	Sedro Woolley	40	14.00	560	1.9%	\$ 5,969.43	\$ 10.88
14	Sedro Woolley	40	14.00	560	1.9%	\$ 5,969.43	\$ 10.88
20	Yakima	40	21.80	872	3.0%	\$ 11,624.65	\$ 26.37
21	Anacortes	40	18.00	720	2.5%	\$ 8,561.71	\$ 17.98
33	Sedro Woolley	36	17.25	621	2.2%	\$ 6,881.29	\$ 13.37
34	Walla Walla	40	23.00	920	3.2%	\$ 12,713.40	\$ 29.35
35	Walla Walla	40	24.00	960	3.3%	\$ 13,665.26	\$ 31.96
36	Wenatchee	36	14.25	513	1.8%	\$ 5,331.09	\$ 9.13
37	Wenatchee	40	23.35	934	3.2%	\$ 13,041.94	\$ 30.25
38	Yakima	36	22.00	792	2.7%	\$ 9,939.67	\$ 21.75
39	Yakima	36	22.00	792	2.7%	\$ 9,939.67	\$ 21.75
40	Anacortes	40	22.00	880	3.1%	\$ 11,802.06	\$ 26.85
41	Anacortes	40	15.00	600	2.1%	\$ 6,556.74	\$ 12.48
42	Yakima	40	14.00	560	1.9%	\$ 5,969.43	\$ 10.88
43	Yakima	40	23.00	920	3.2%	\$ 12,713.40	\$ 29.35
44	12			\$ 28,836			
45							

6. Press Enter and in cell A44 the result is 12. It means the number of cells with Purple cell color is 12 cells.

	A	B	C	D	E	F	G
1		Color I want to count:			Hoover over the coment in cell A1.		
2							
3							
4	Division	Hours	PayRate	GrossPay	Output	Cost	Per We
5	Anacortes	40	23.00	920	3.2%	\$ 12,713.40	\$ 29.35
41	Anacortes	40	15.00	600	2.1%	\$ 6,556.74	\$ 12.48
42	Yakima	40	14.00	560	1.9%	\$ 5,969.43	\$ 10.88
43	Yakima	40	23.00	920	3.2%	\$ 12,713.40	\$ 29.35
44	12			\$ 28,836			

7. You can also test another color. Change the color in cell D1 with any color you want from the data by using Format Painter to get same color.



8. You can also pack the UDF, so that function can be used in another workbook and machine. Please following this steps:

#### Step 1: Save The Workbook

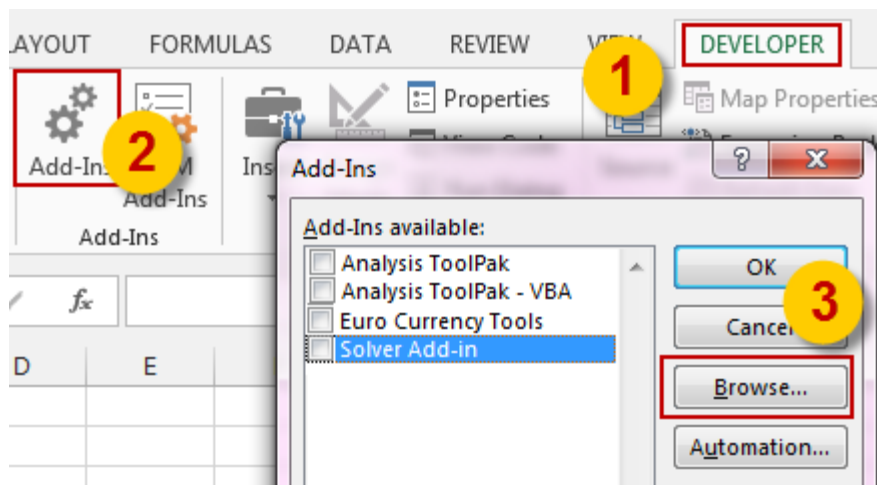
1. Fill the name that you want named to at the File Name box. Here I name it Count Cell Color.
2. For the file type, choose Excel Add-In (.xlam) format.

Note: You can save your Add-In file anywhere you want. But if you want it to be listed on Excel built-in, you should save it into the default location. On my computer with Windows 7 operating system, the default location for any versions of Microsoft Excel is:

C:\Users\RADDINI\AppData\Roaming\Microsoft\AddIns

#### 1. Step 2: Install the Add-In

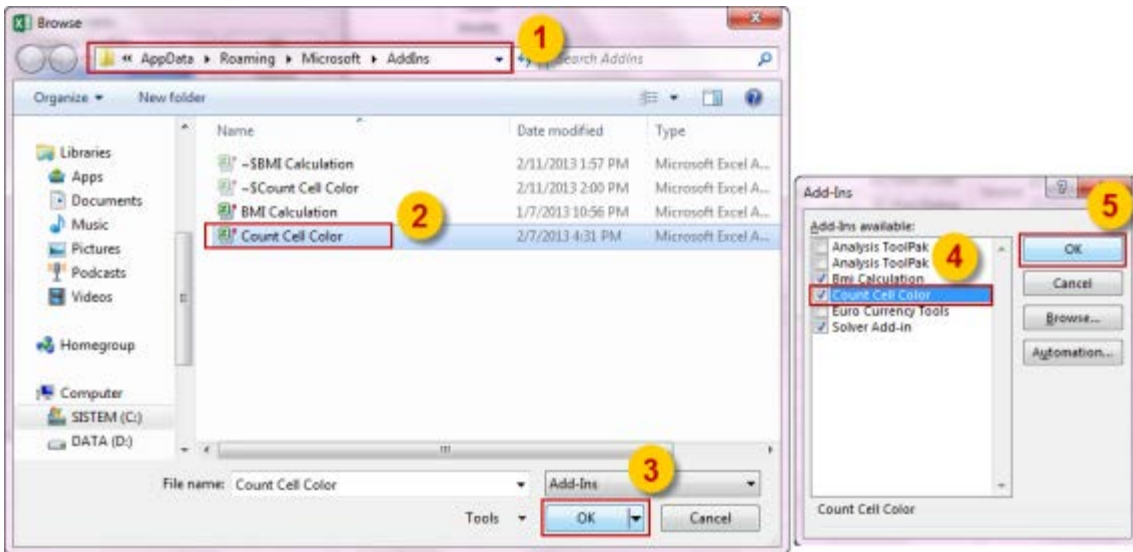
1. Open Microsoft Excel on computer that you want install the Add-In. Open Add-Ins dialog box by clicking Add-In on the Developer tab.
2. On the Add-In dialog box, click Browse button so Browse dialog box is displayed.



Or you can click File tab, Options, Add-in, and then click the Go button.

3. Go to file location that Add-In file is saved. Choose the file and then click Open.

4. On the Add-Ins dialog box make sure the add-in checkbox is unchecked. Then click OK.



Now the Count Cell Color UDF has installed and ready to use.